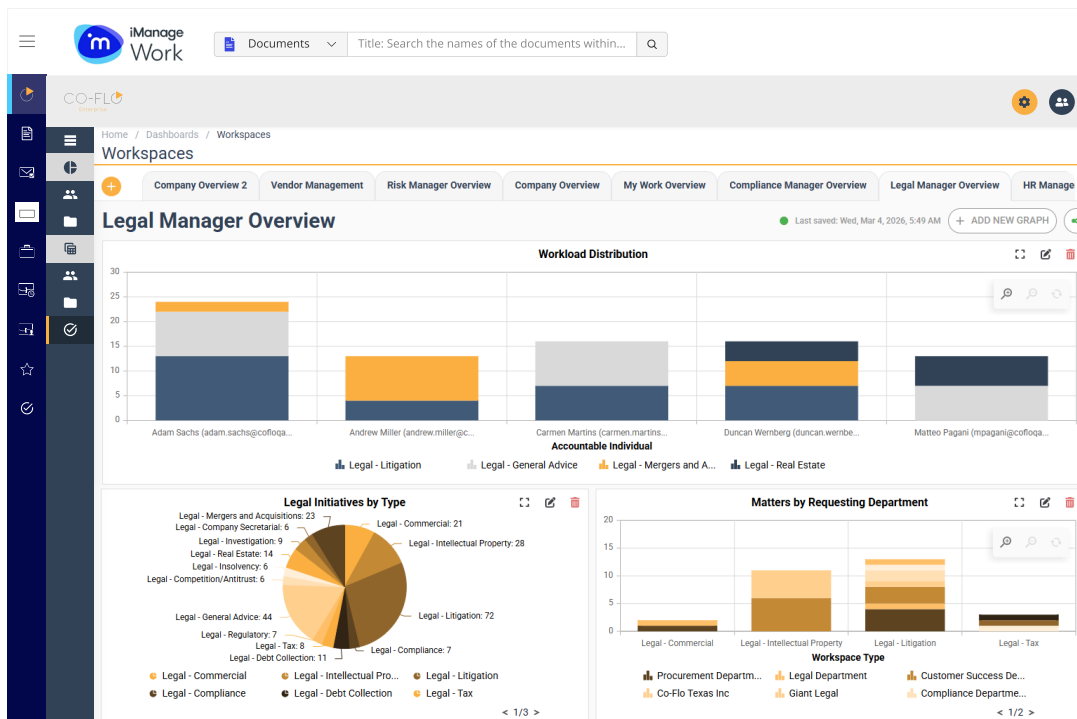


iManage | Co-Flo Solution for Legal Departments



Legal Groups Face Increasing Workloads and Limited Resources

Today's legal teams are facing pressures on several fronts. Workloads are increasing faster than budgets, driven by the increasing pace of change to regulatory compliance requirements and other changes. According to the CLOC 2025 State of the Industry Report, about 40% of the 2,400 respondents say their answer to growing demand includes increasing the workload of existing legal resources. Another 35% of respondents plan to increase use of current technology, while 36% plan to re-engineer or standardize work processes.

What legal teams want, the survey summarizes, is to increase value: delivering greater value to their employers, while deriving greater value (through automation and process focus) from existing teams.

iManage and Co-Flo have partnered to deliver a comprehensive solution for legal departments that combines the industry's leading document and knowledge management with operational reporting, work management, automation and process management specifically designed for legal work. The result? A new level of operational visibility, agility and automation directly linked to the work itself – a powerful combination that can lift team performance and enable intelligent, data-driven, decision making.

The iManage | Co-Flo Solution for Legal

The iManage | Co-Flo Solution for Legal is a cloud-native software application that extends and enhances iManage Work, the industry's leading document management and collaboration platform, specifically for legal departments. Built by experts with decades of industry experience, this is the first and only application to extend iManage with operational metadata, key dashboards and business workflows designed especially for legal processes. iManage and Co-Flo also offer solutions for Compliance, Risk and HR, so all four groups can collaborate effectively, closing a gap today often cited by legal departments.

For end-to-end contract lifecycle management, from generation and negotiation through to e-signature and post-signature obligation tracking, see the **iManage | Co-Flo CLM for Legal** solution.

The iManage | Co-Flo Solution for Legal enables:

Faster, more accurate onboarding of new work:

Smart forms ensure every piece of work enters the system with the right metadata captured consistently from the start, whether created directly in the platform or received from your existing intake systems. Beyond improving accuracy, this structured data layer is what makes AI work: enabling AI to extract obligations, surface risks, automate routine tasks and generate richer, more meaningful insights across your entire operation.

Greater visibility over all work-in-progress:

Real-time reporting of all work status reduces the need for status meetings while coordination is improved. Co-Flo is fully integrated with Microsoft ToDo and iManage Tracker for one unified task management approach, so you can identify bottlenecks and overdue or missed steps, to avoid problems later.

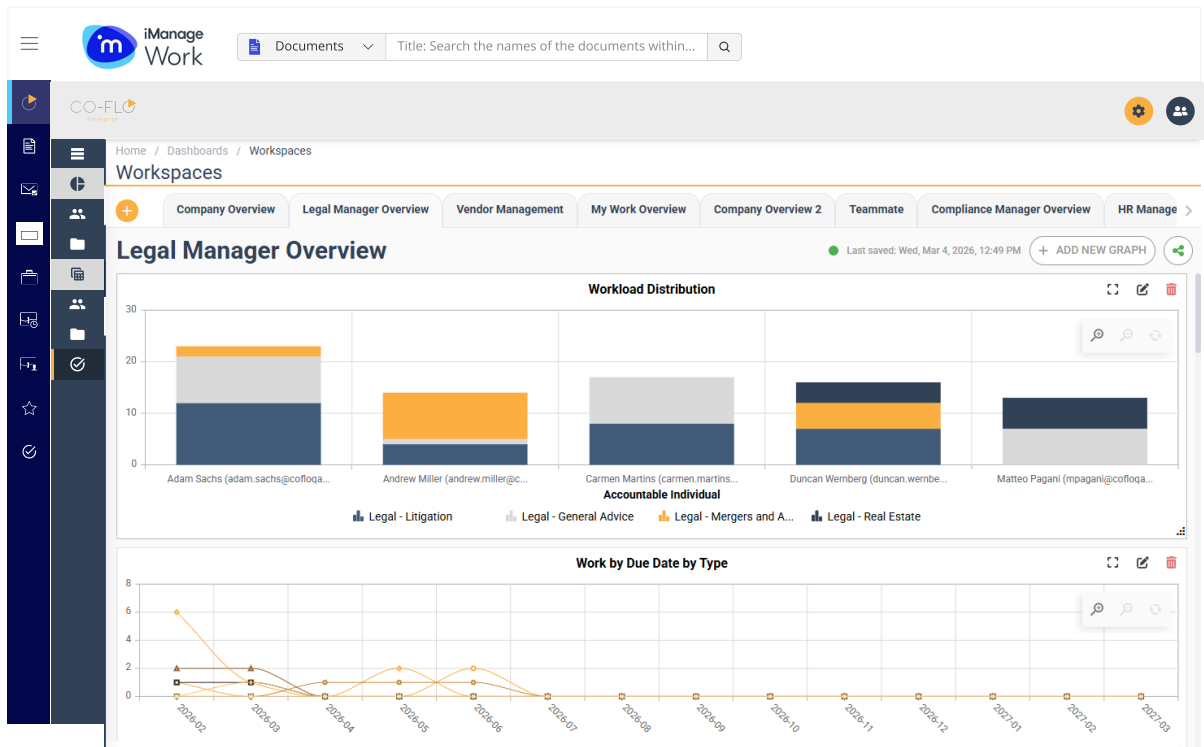
More efficient, consistent legal processes:

Standardize work processes globally with stages and checklists for each kind of work, integrated with the relevant working documents, emails and Teams messages in shared project workspaces. Configure your own processes or start with pre-configured templated processes for:

- Commercial matters
- Intellectual property
- Litigation
- Debt collection
- Tax
- Competition antitrust
- Insolvency
- General advice
- Investigation
- Real estate
- Company secretarial

Pre-built templates extend beyond Legal to cover the functions your team collaborates with most, including Compliance, Risk, HR and Procurement, enabling seamless, consistent coordination across the enterprise.

Comprehensive Dashboards Provide Visibility Into Project Status and Delivery



Improved team productivity and on-time delivery:

Real-time operations dashboards answer key questions like:

- How much work of each type (i.e. policy, audit, advisory) is incoming?
- Who is doing the work?
- What is the status and stage of each unit of work?
- Is any work blocked or overlooked?
- What is the risk or priority assigned to each component of work (as needed)?

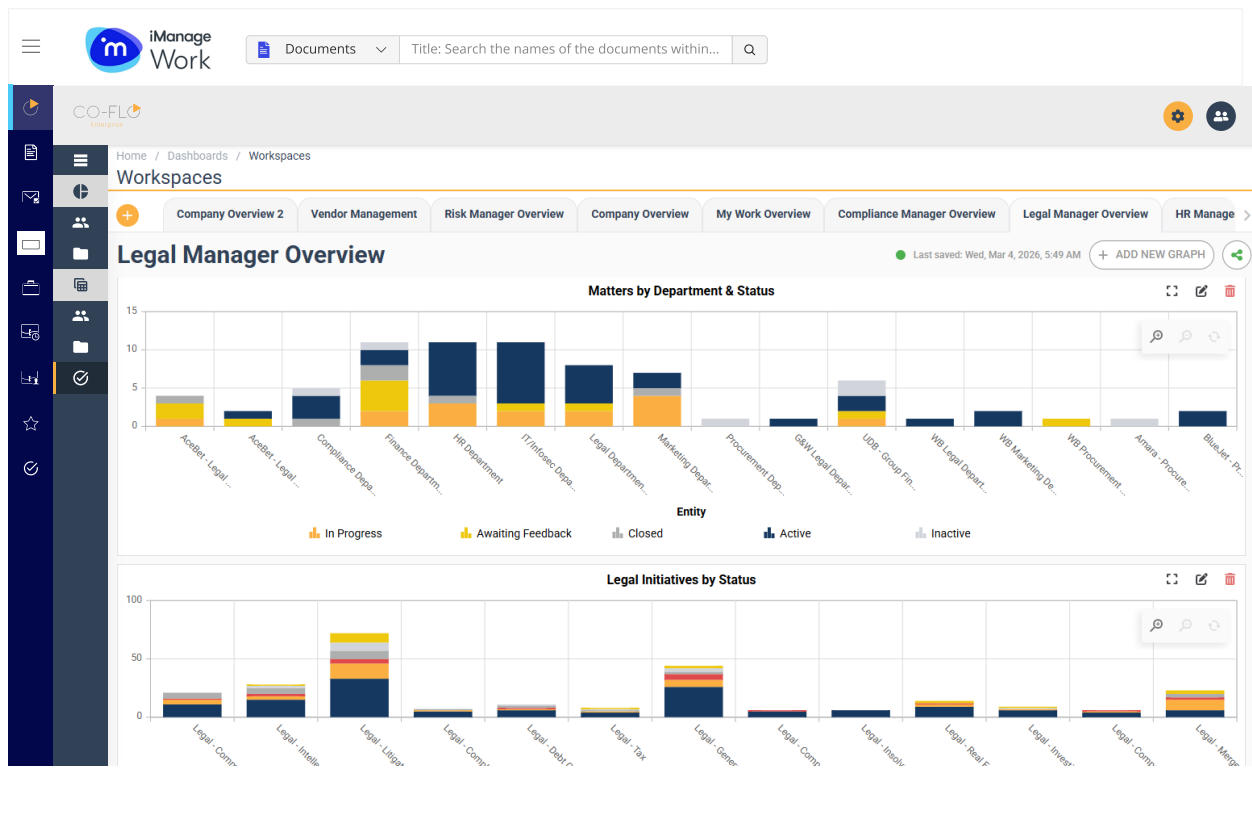
Dashboards show each person's work prioritized, so all staff stay aligned with dynamic departmental priorities.

Monitored operations and trends:

Strategic questions are answered, including:

- How is our legal workload distributed across the team and delivery lifecycle?
- Are we directing legal resources at our most critical strategic priorities?
- Are our legal processes optimized for efficiency and scalability to support growth?
- Can we demonstrate our department's value and performance clearly to the board and senior leadership?
- What are the potential legal risks facing the organization?

Strategic Dashboards Deliver Department-wide Impact



A structured entity hierarchy:

Replicate your entire corporate structure within iManage, from parent companies and subsidiaries to individual legal entities and business units, and connect every matter, document and compliance record directly to the relevant entity. An intuitive visual hierarchy map lets your team navigate from any entity to its full body of associated work and records, so the right information is always a click away, no matter how complex the group structure is, and with nothing misfiled or missed.

Greater agility in work delivery:

Monitor work distribution across the team and reassign work quickly and easily based on staff availability or changes, re-organization or changing business priorities. Ensure individual team members are not overloaded and at risk of burnout.

Streamlined drafting filings and revisions:

Use iManage AI to tap into best practice libraries and previous work product across offices to generate standardized, approved language. Collaborate on responses with colleagues while maintaining full control over your key documents, emails and Teams conversations in unified workspaces. Version control and audit trails provide visibility and control of key documents as they are developed.

Accelerated work delivery with automated workflows and integrated e-signatures:

Streamline employee attestations, document approvals, reviews and much more with integrated routing and approval workflows, and e-signature integration.

All obligations and time-based regulatory requirements to be fulfilled:

Use collected metadata or iManage AI to extract obligations and key submission and renewal milestone dates from finalized contracts and filings. Standardize and customize reporting on obligations and risks. Follow-up actions and renewals are scheduled and assigned, ensuring key dates are not missed and eliminating missed deadlines.

Operational data to be transformed into sharper insight and more confident decisions:

Improve processes, eliminate bottlenecks, justify initiatives, challenge low-value requests with evidence and build the case for the resources your team needs to succeed.

Reduced time and cost to value:

Take Co-Flo's pre-designed templates, then modify as needed to fit your organization's specific needs and terminology.

Part of a Suite of Work Operations Management Solutions from iManage and Co-Flo

The iManage | Co-Flo Solution for Legal is one of a suite of departmental solutions for the Assurance functions of the enterprise, including:

The iManage | Co-Flo CLM for Legal solution:

Manage contract generation, negotiation, finalization and approval, e-signature, and post signature obligation management, all fully integrated into iManage.

The iManage | Co-Flo Solution for Risk:

Manage enterprise risk with operations and risk-specific dashboards, intelligent work intake automation, obligation and key date management, document management and collaboration.

The iManage | Co-Flo Solution for Compliance:

Create a continuous compliance environment with operations and compliance specific dashboards, intelligent work intake automation, obligation and key date management, document management and collaboration.

The iManage | Co-Flo Solution for HR:

Manage all HR initiatives, such as recruitment, onboarding, performance management, training and policy development centrally with Co-Flo and iManage. Ensure transparency into HR operations through dashboarding and reports.

With iManage | Co-Flo Solutions, you can collaborate in the same project workspaces with Compliance, Risk and HR – all in one unified system. Using iManage Security Policy Manager each group and individual sees only what they are permitted by policy. You get secure collaboration with enforced “need to know” security, all seamlessly integrated, making effective and secure cross departmental collaboration a practical reality.

All Co-Flo solutions are fully integrated into (and require) iManage Work, the industry leading work management platform, trusted by 80% of the world's leading law firms and over 1,400 leading legal and compliance departments. Co-Flo's seamless integration into the iManage platform enables a single view into all work, contributing to faster user onboarding and greater user adoption.



Take the next step

See all that iManage | Co-Flo Solutions can do for your organization:

About iManage

Dedicated to Making Knowledge Work™, iManage cloud-native platform enables organizations to work more productively, collaboratively and securely. Employing award-winning AI-enabled technology, an extensive partner ecosystem and a customer-centric approach, iManage provides support and guidance you can trust to help you leverage knowledge to drive better business outcomes.

Visit www.imanage.com to learn more.

About Co-Flo

Co-Flo is a strategic iManage partner, delivering its cloud-native operations management suite for corporate service teams. Built by technology and operations experts, Co-Flo extends iManage into a multi-departmental solution, optimizing service delivery and team productivity across Legal, Compliance, Risk and HR departments. Co-Flo ensures visibility and control over work-in-progress to improve timeliness, consistency and quality of knowledge work.

Visit www.co-flo.com to learn more.